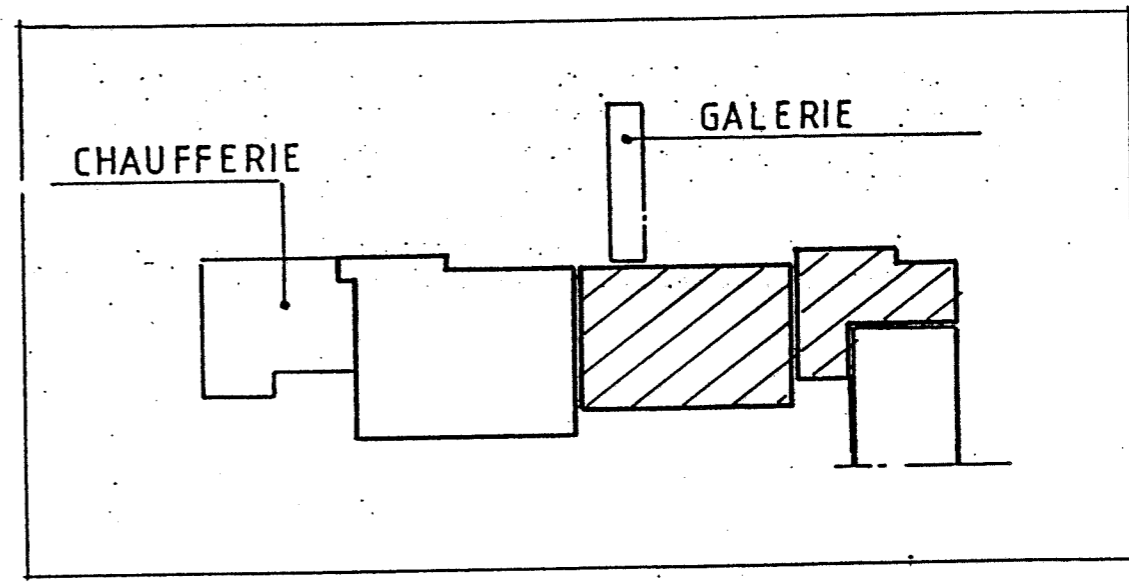
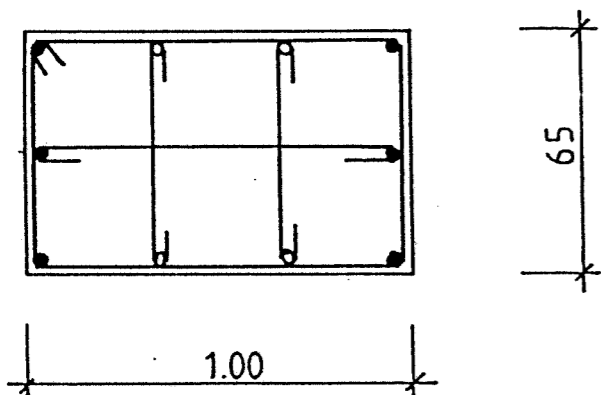


MODIFICATIONS		Indice	Date
HYPOTHÈSES DE CALCUL (B.A.E.L.)			
STABILITE AU FEU	H	CHARGE PERMANENTE	daN/m.
SEISME	-	CHARGE VARIABLE	daN/m ²
ARCHITECTE S.C.P.A. O.RIGAL - C.BARGAS		MAÎTRE D'OUVRAGE FONDATION ST JOSEPH	
ENTREPRISE SOGEA		BUREAU DE CONTROLE. SOCOTEC	
		BETON Fc 28 = 25 MPa	ACIERS HA Fe E 400
			HA Fe E 235
			TS Fe



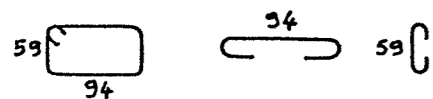
SETI		EVOLIC Bât D 1 Impasse Paradou La Soude 13009 MARSEILLE Tél. 91 25 12 12 - Télécopie 91 73 66 44	
BUES II bis			AFFAIRE M_792
HOPITAL ST JOSEPH - MARSEILLE			PLAN N° E/13
aile EST FONDATIONS Attentes poteaux - FERRAILLAGE			
ECHELLES	INGENIEUR W.L	DESSINATEUR JCG.	DATE 10_8_90
Ce plan est la propriété de SETI Il ne peut être communiqué ou reproduit sans autorisation			

P1_P2_P3

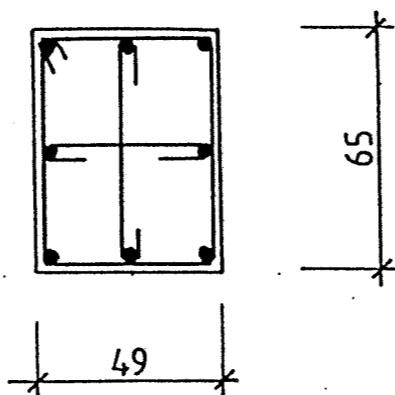


4 HA14 + 6 HA12

Cadre + 1 ép. + 2 ép. HA6 e=12

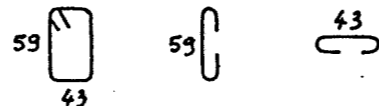


P4_P5

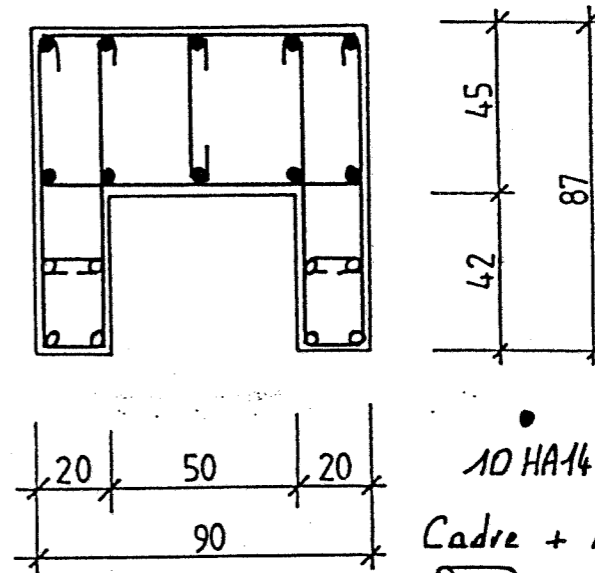


8 HA12

Cadre + 1 ép. + 1 ép. HA6 e=14

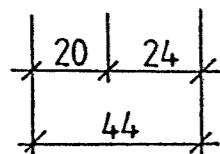
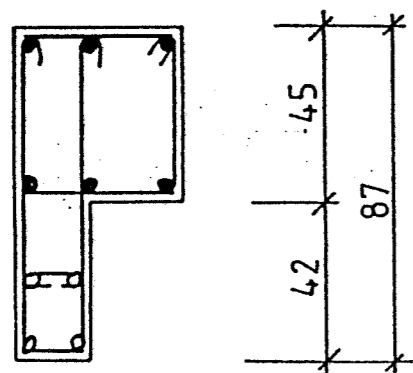


P6_P7_P8



10 HA14 + 8 HA12
 Cadre + 2 HA6 e=14
 1 ép. + 2 ép. HA6 e=14

P9_P10

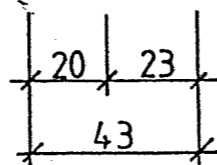
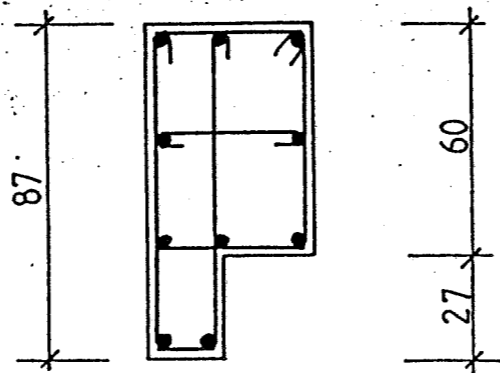


4 HA10 + 6 HA14

Cadre + 1 ép. + HA6 e=16

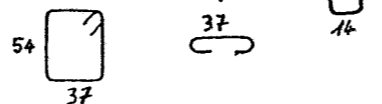


P11

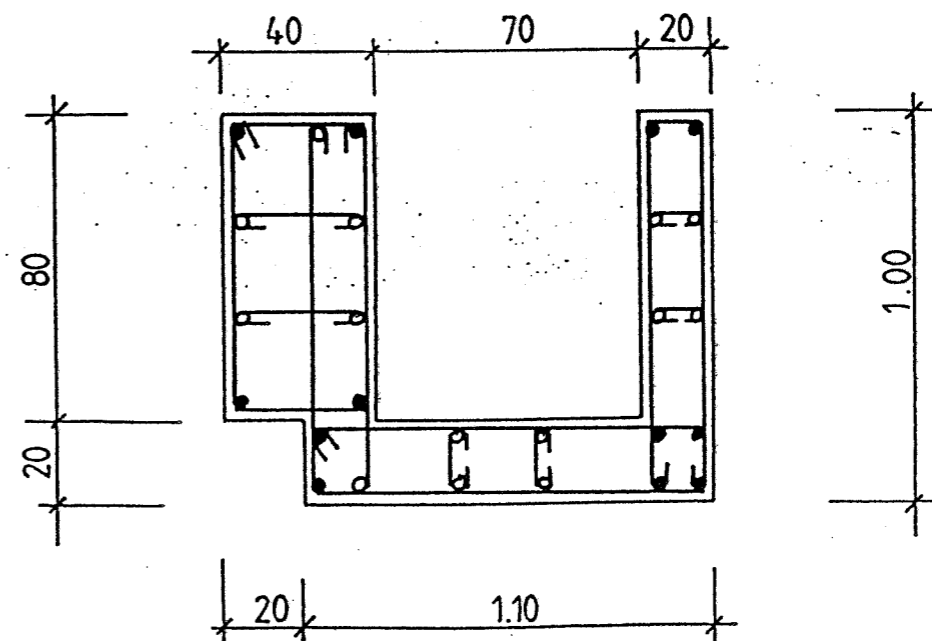


10 HA12

Cadre + 1 ép. + HA6 e=15

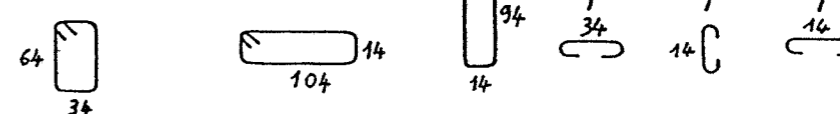


P12

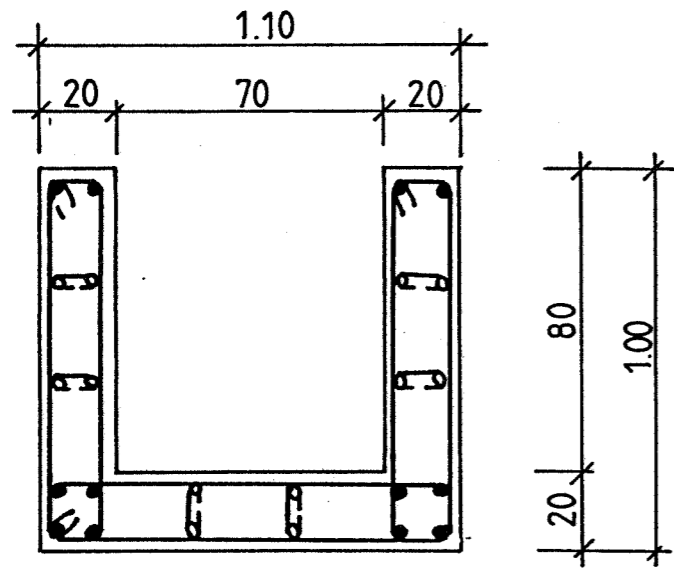


14 HA10 + 12 HA12

1 Cadre + 1 Cadre + 2 HA6 e=16

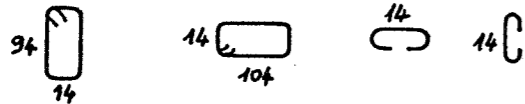


P13

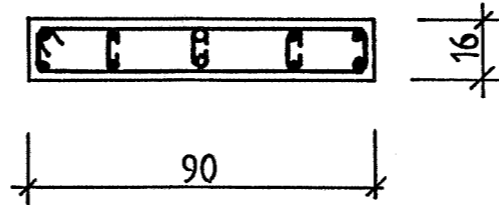


12 HA10 + 12 HA12

2 Cadres + 1 Cadre + 4 ép + 2 ép HAB e=12

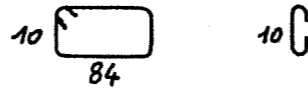


P14_P15_P16

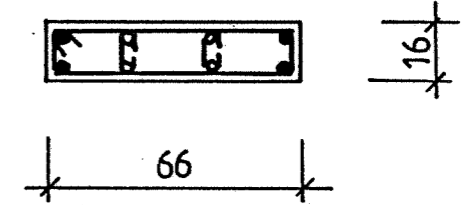


2 HA10 + 8 HA12

1 Cadre + 3 ép. HAB e=12

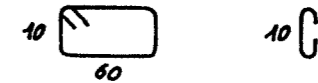


P17

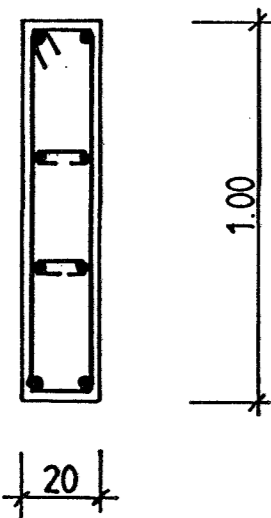


4 HA10 + 4 HA12

1 Cadre + 2 ép. HAB e=12



P18

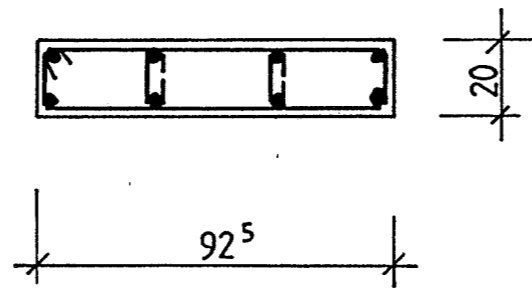


8 HA12

Cadre + 2 ép. HAB e=22

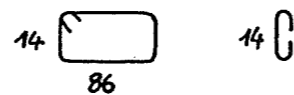


P19

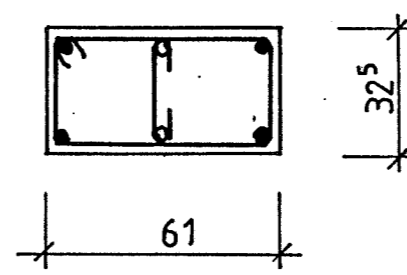


8 HA12

Cadre + 2 ép. HAB e=14

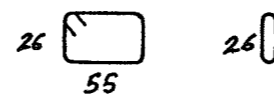


P20

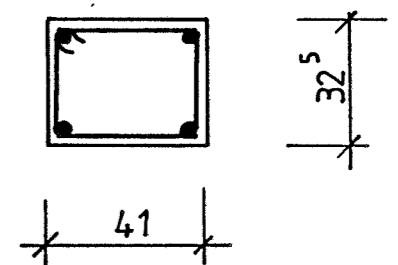


2 HA10 + 4 HA12

Cadre + 1 ép. HAB e=14

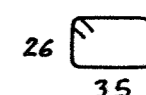


P21

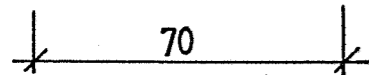
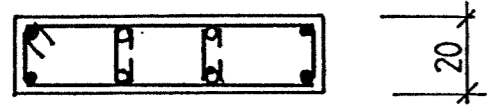


4 HA14

Cadre HAB e=18

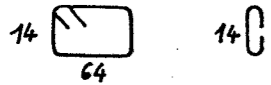


P22_P23

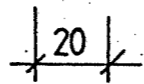
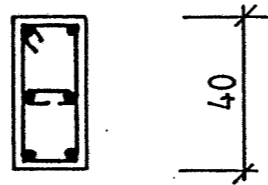


4 HA16 + 4 HA20

Cadre + 2 ép. HA6 e=16

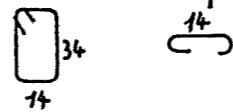


P24_P27

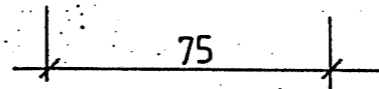
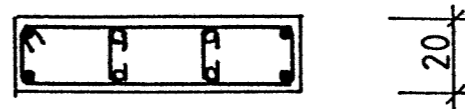


6 HA10

Cadre + 1 ép. HA6 e=12

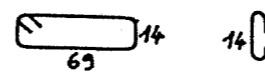


P25

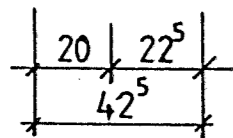
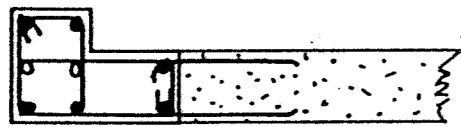
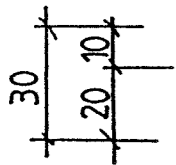


4 HA10 + 4 HA12

Cadre + 2 ép. HA6 e=12

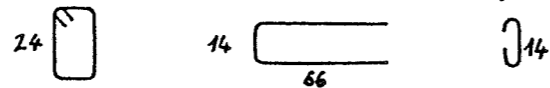


P26



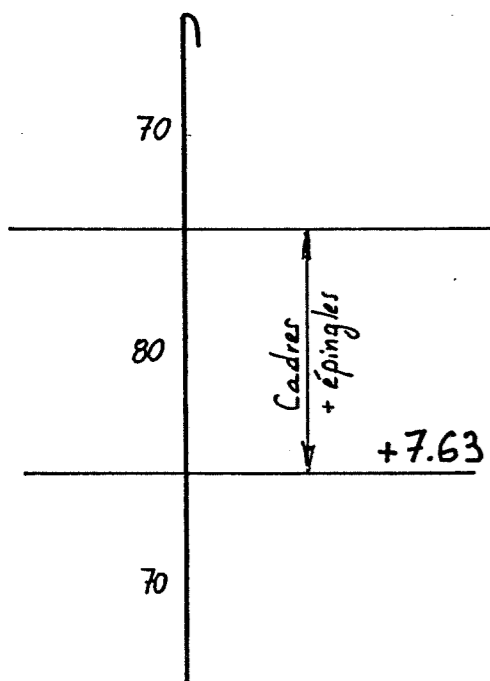
2 HA10 + 6 HA12

1 Cadre + 1 ép. HA6 e=12

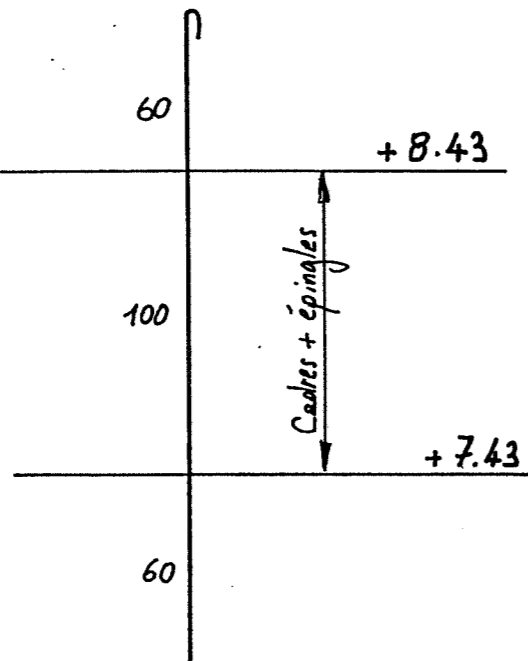


LONGUEUR DES ATTENTES

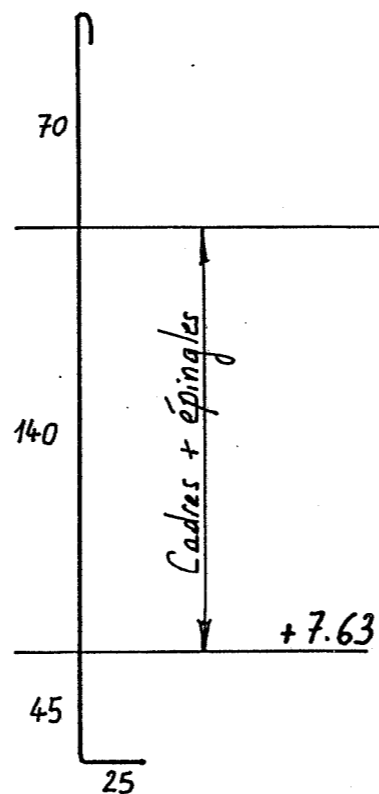
P1_P2_P3



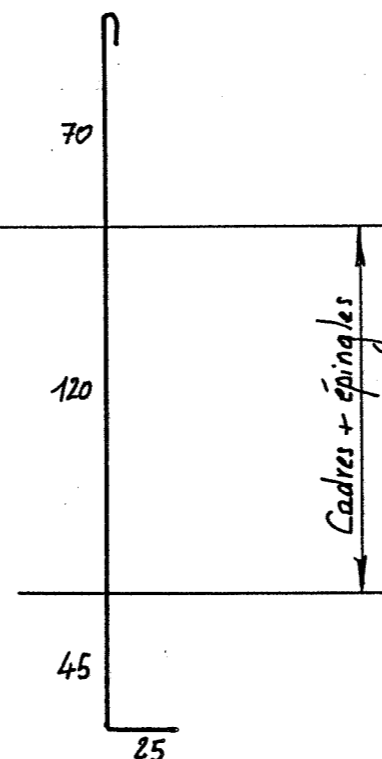
P4_P5



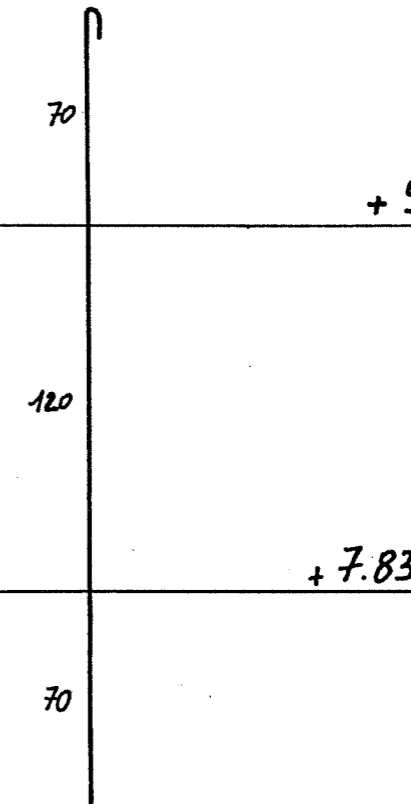
P6



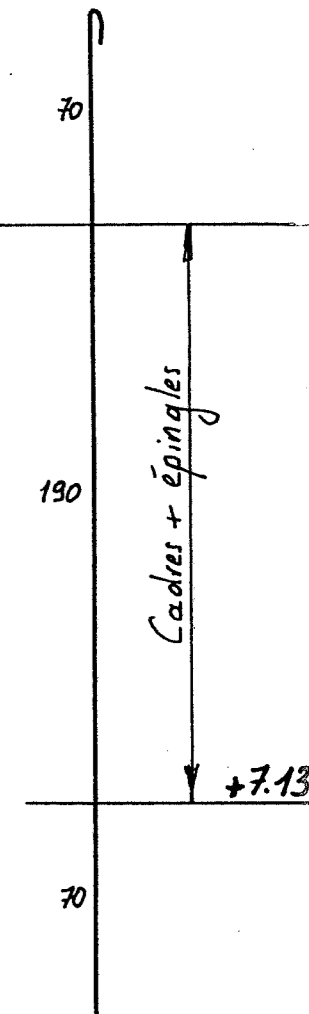
P7



P8

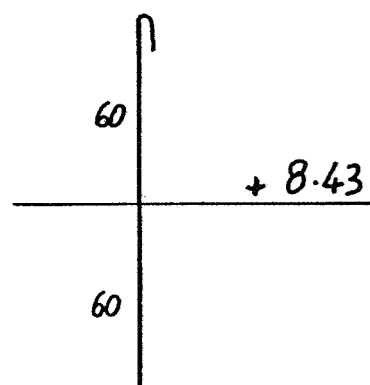


P9_P10

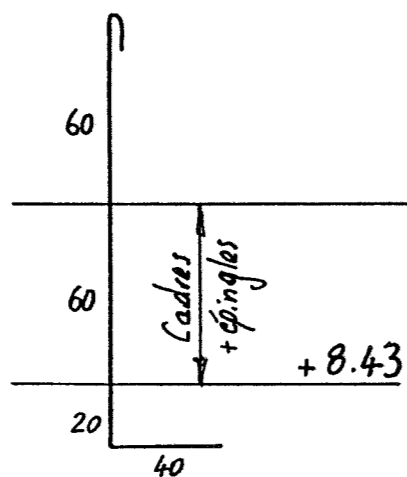


P11_P26

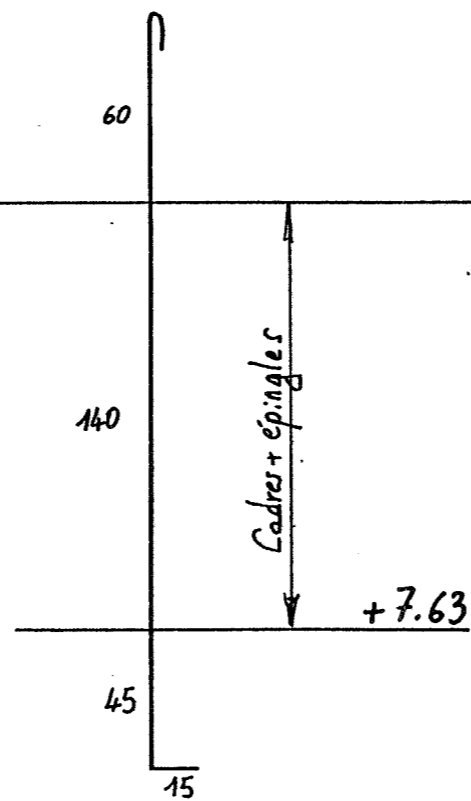
(pas de cadres)



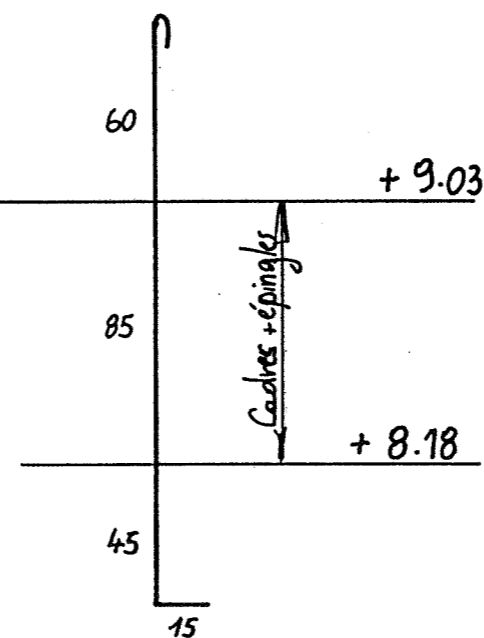
P12_P13



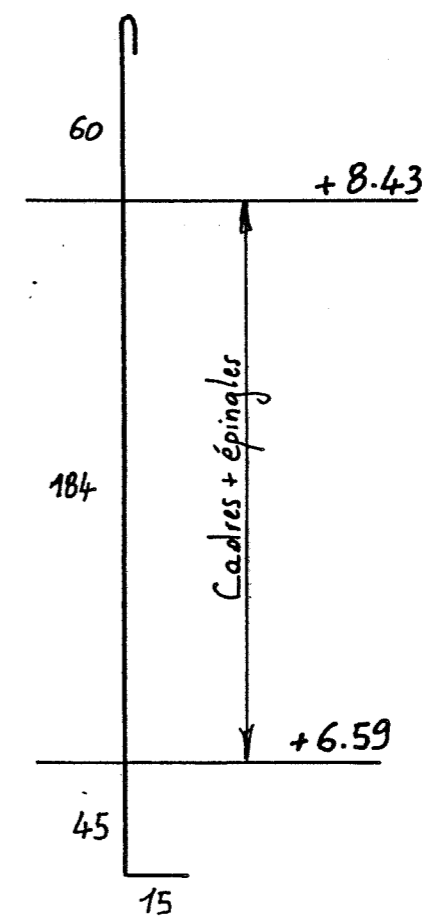
P14



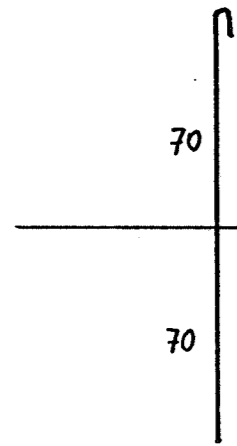
P15_P16_P17



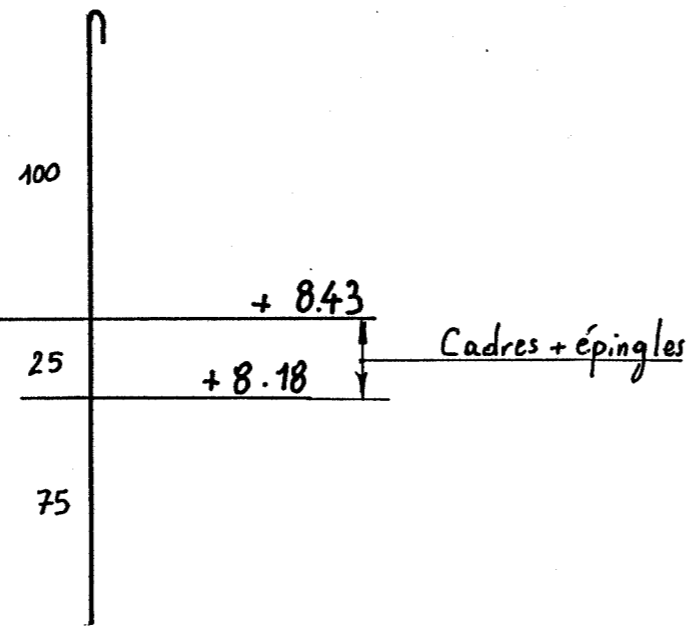
P19_P20



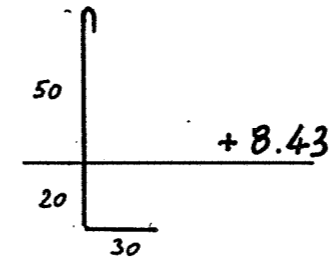
P21
(pas de Cadres)



P22_P23



P27
(pas de cadres)



Nota: • P18 et P24 : attentes voir L26
• P25 : attentes voir PV9